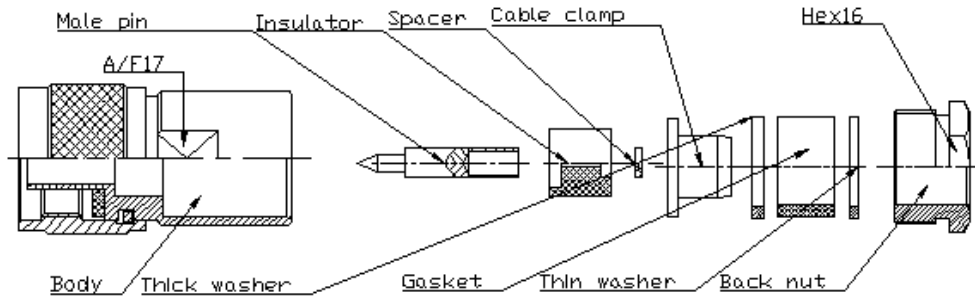
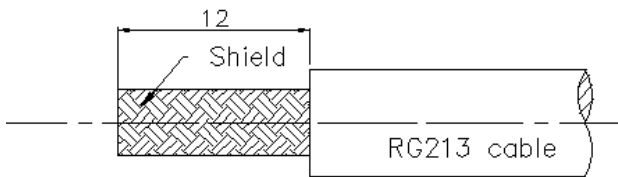


Assembly Instruction

N Male Clamp Connector For RG213 Cable(N-J213A)

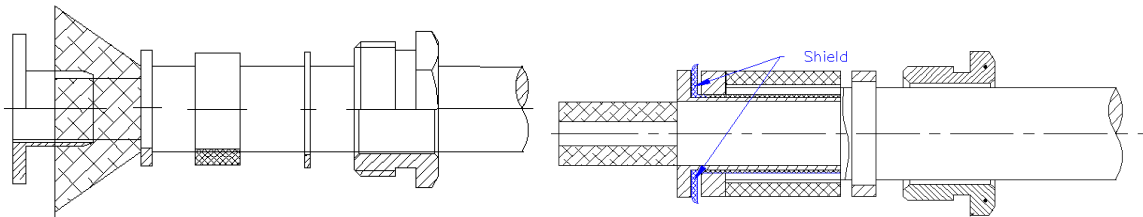


1.Strip the cable to be dimension as shown below.

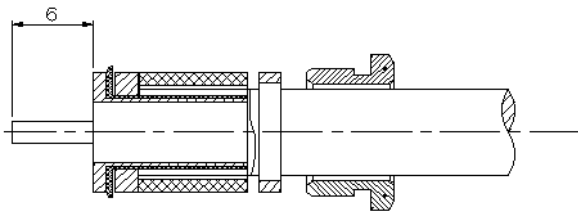


2.Slide the back nut, thin washer, gasket (O-ring) onto the cable jacket and thick washer onto shield.

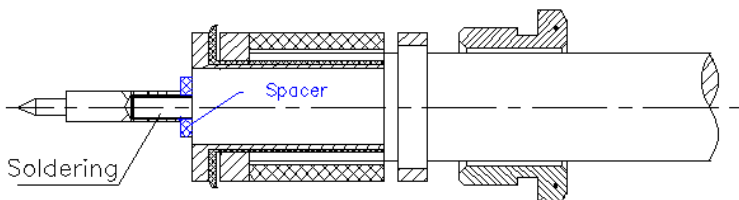
Then fold back the shield against thick washer, insert the cable clamp into inside between shield and insulator and trim off the redundant shield as shown below.



3. Remove the insulator of cable and keep the exposed inner conductor to be the dimension as shown below.



4. Slide the spacer onto the inner conductor of cable and solder the male pin onto the inner conductor of cable as shown below.



5.Slide the insulator onto the male pin ,insert the assembled parts into body and screw the back nut with body together firmly as shown below.

